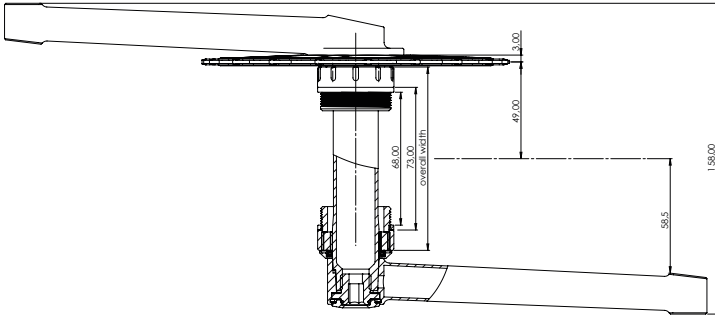


## SPECS

Custom cold drawn seamless 4130 CrMo tubes  
air hardened steel according to VELOSPEC PRO 75 standard  
integrated 24mm spindle made of 4130 CrMo steel  
SRAM 3-bolt direct mount  
all other parts made of 7075T6 Aluminum  
wave spring made of stainless steel  
495g incl. all hardware  
Made in Germany

Chainline: 49mm with 3mm offset chainring:  
Q-Factor: 158mm  
Chainstay width: max. 112mm

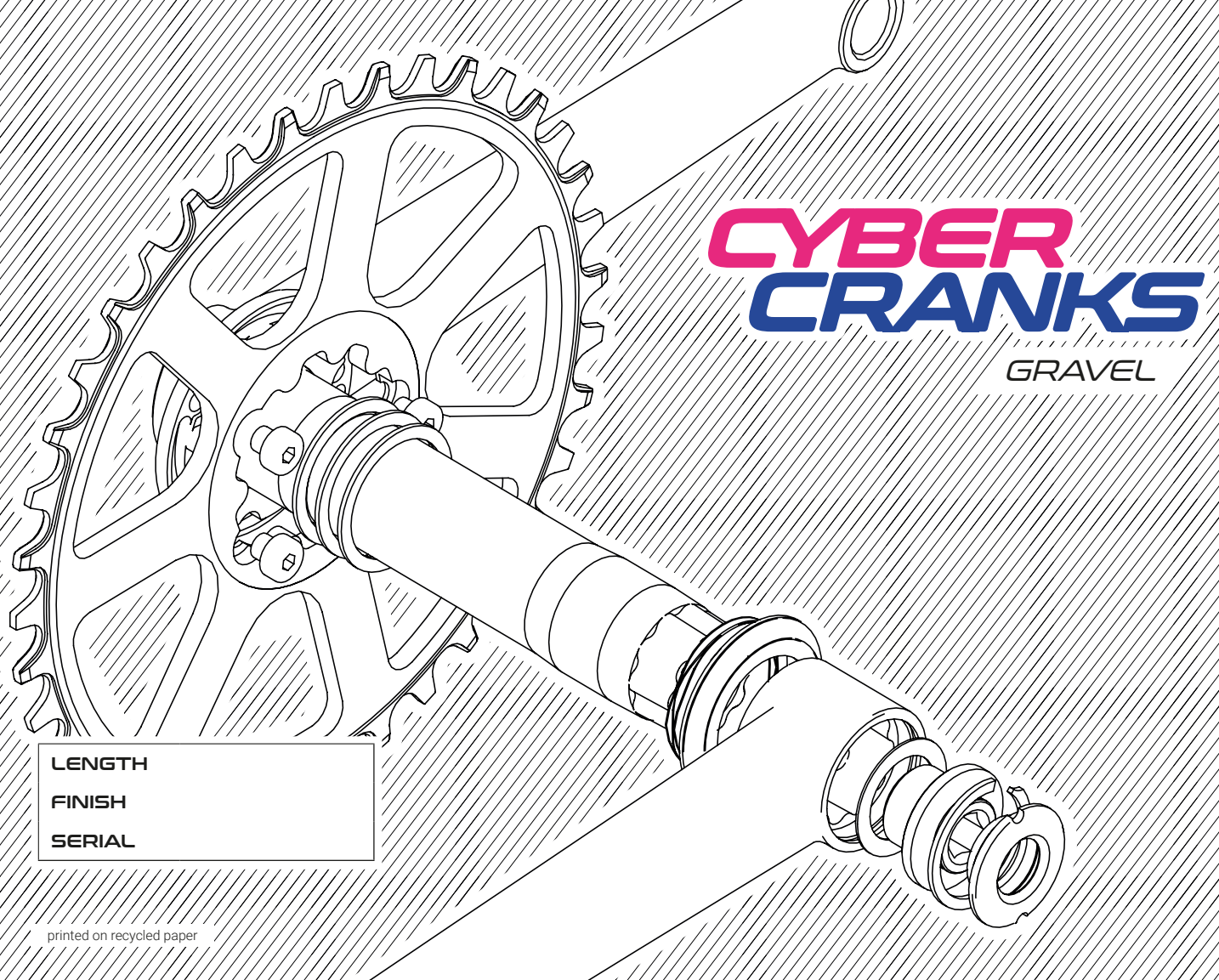


## WARRANTY

The **CYBER CRANKS** have been successfully tested by an independent test laboratory for XC and gravel use with a maximum rider weight of 110 kg. Downhill or BMX use is not recommended. The product comes with a 2-year warranty for the original purchaser. The warranty does not cover improper assembly, improper use or accidents.

**cyber cycles**  
07743 Jena  
Germany

[www.cybercycles.de](http://www.cybercycles.de)



**CYBER**  
**CRANKS**  
GRAVEL

LENGTH

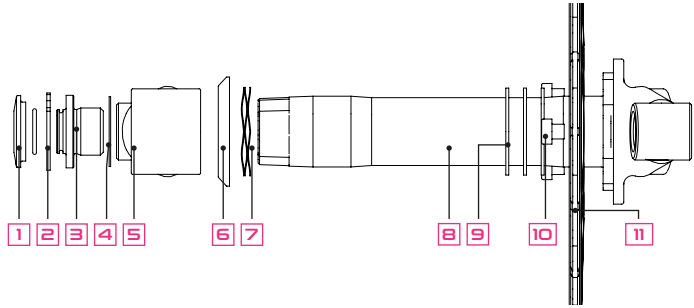
FINISH

SERIAL

printed on recycled paper

## SCOPE

Thank you for purchasing a set of **CYBER CRANKS GR**. Please read assembly instruction carefully and enjoy your ride. Following parts are included:



1 Cap	5 Crankarm Left	9 Spacer 1mm (3x)
2 Retention Clip	6 Compression Ring	10 Chaining Bolt (3x)
3 Crankarm Bolt	7 Wave Spring	11 Chaining (not included)
4 Washer	8 Crankarm Right	

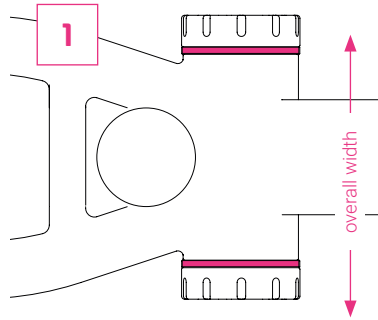
## BOTTOM BRACKETS

The **CYBER CRANKS GR** are designed for use with 24mm (Hollowtech 2) bottom brackets and fit all bottom brackets with a shell width of max. 11.2mm and a housing width of 68 or 73mm. The following threaded bottom brackets were measured:

bottom bracket	Shimano BBR60	Shimano MT800	Shimano BB93	Race Face Team	Hope Stainless	Praxis MTB	Chris King Threadfit
cup width	11.4mm	10.3mm	10.4mm	10.6mm	10.4mm	10.3mm	10.4mm
68mm	(yes)	yes	yes	yes	yes	yes	yes
73mm	-	yes	yes	yes	yes	yes	yes

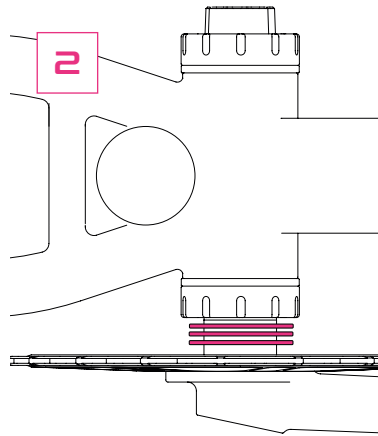
It is also possible to choose pressfit type bottom brackets. Please make sure, that overall width of your installed bottom bracket is between 92.5 and 95.5mm. If you have a custom bottom bracket outside this spec, please contact us. We would like to support you with a custom setup of spacer.

## ASSEMBLY INSTRUCTIONS



First, install the bottom bracket according to the manufacturer's instructions. Then measure the width of the installed bottom bracket. The width must be between 92.5 - 95.5mm.

For 68mm wide frames, a spacer of 2.5mm should be used between the frame and the bottom bracket shell.

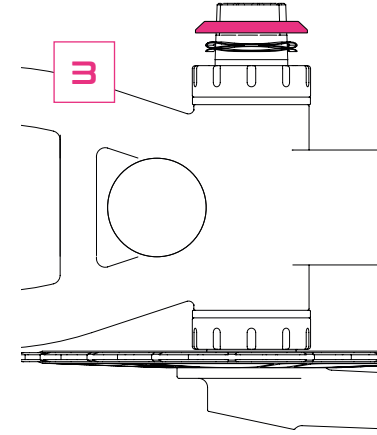


It is important that you use the supplied spacers to preload the bearings correctly. A different number of spacers is provided depending on the width.

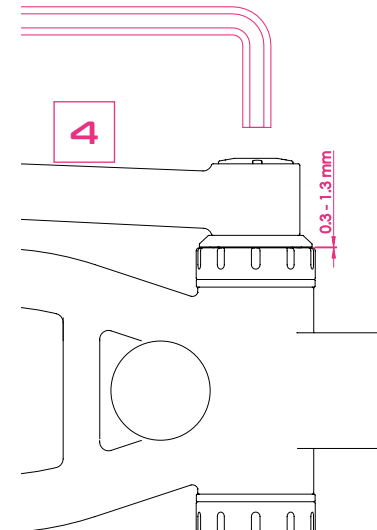
Depending on overall width of your bottom bracket, slide 1, 2 or 3 spacers onto the spindle of the **CYBER CRANKS** and insert the spindle through the bottom bracket.

overall width	number of 1mm spacer
95.5 - 94.5mm	1
94.5 - 93.5mm	2
93.5 - 92.5mm	3

Depending on the chain line, the spacers can be positioned on the right or left side of bottom bracket.



The wave spring and the compression ring must now be pushed onto the spindle. Check clearance between chainring and chainstays.



Finally, the left crank including the screw is fitted onto the spindle. The crank bolt must be tightened with an 8mm allen key and 25 Nm.

After tightening the screw, a gap of between 0.3 - 1.3 mm should be visible. If gap is larger please add one 1mm spacer on one side. If gap is smaller then 0.3mm please remove one 1mm spacer.

It is recommended to secure the screw with a medium-strength threadlocker (e.g. Loctite 243).

If you have not used locking varnish, you should check the crank bolt again after approx. 50 km and tighten it if necessary.